

Source-Ray

Film Based Portable X-Ray Systems



Model: SR-115

- High Power Output (1.5 kW)
- 100 kV, 15 mA, 60 mAs
- High Frequency
- Microprocessor Control
- Light Weight /Very Agile
- Cost Effective
- Designed for Reliability
- Durable Powder Coat Finish
- Limited 3 year Warranty



Model: SR-130

- Higher Power Output (3.0 kW)
- 100 kV, 30 mA, 120 mAs
- High Frequency
- Microprocessor Control
- CR/DR Compatible
- Light Weight
- Designed for Reliability
- Durable Powder Coat Finish
- Limited 3 year warranty



Model: SR-115



The Model SR-115 was designed to focus on a **price sensitive market** that addresses **cost containment goals** for radiology capital equipment purchases in the portable x-ray market place.

Developed for clinicians who are satisfied using lower powered x-ray units and who will continue using **traditional film screen systems**.

The SR-115 is a user friendly system designed for **high reliability**, and the **durability** required for the Diagnostic Outreach market.

Providing **state of the art** technology, the SR-115 produces **1.5 kW** of power. It's **70 lb. net weight** makes it the **lightest** portable x-ray system on the market today.

The SR-115 **weighs significantly less** than other systems that produce less output. It provides clinicians invaluable **maneuverability and agility** around beds and other essential equipment in tight areas where space is at a premium, especially in private homes.

Utilizing a small foot print, the SR-115 is an ideal system to **transport in small vehicles** that are economically viable for Diagnostic Outreach Services.

The SR-115 can be used in clinics, nursing homes, private homes, orthopedic practices, sports medicine and correctional facilities.

(Complies with CFR 21 Subchapter J)

The Model SR-130 provides **higher power**, state of the art technology, system reliability and low maintenance, all in a small footprint, lightweight package.

The SR-130 was designed with agility in mind. It's compact, **lightweight construction** makes it easy for the operator to move the system effortlessly.

Delivering **maximum mR/mAs**, the SR-130 produces **3 kW** of power that provides hospital quality imaging, performed anywhere, anytime a portable X-Ray System is transported to a patient.

With it's **3 kW output power**, the SR-130 it is an ideal system for organizations considering the purchase of a **CR-System**.

CR-Systems currently operate at 200 speed. The SR-130 provides the power required to compensate for this slower operating speed **without compromising image quality**.

The SR-130 is a user friendly system designed for **high reliability** and the **durability** required for the Diagnostic Outreach market.

The **SR-130** can be used in hospitals, clinics, nursing homes, private homes, orthopedic practices, sports medicine, correctional facilities and military field deployable applications.



(Complies with CFR 21 Subchapter J)

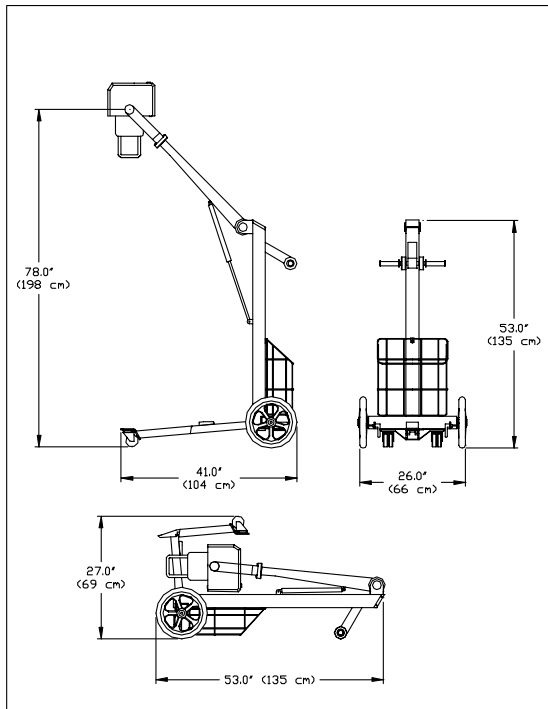
Model: SR-130



Model SR-115

SPECIFICATIONS

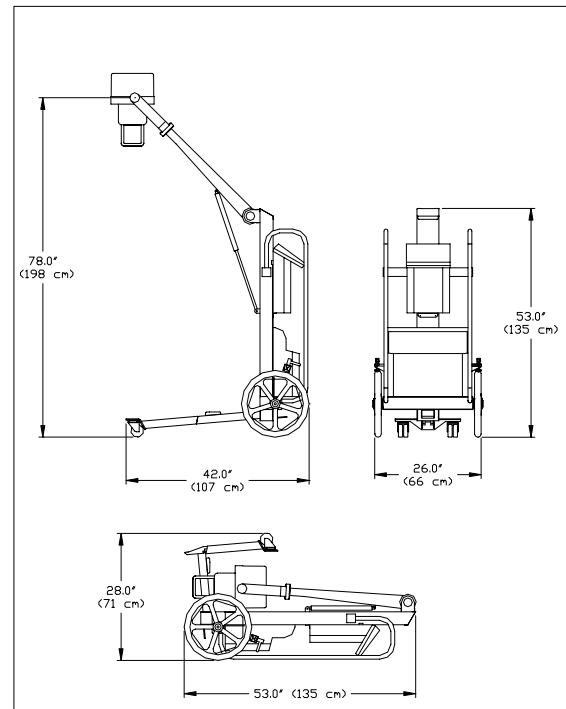
<u>Generator</u>	High frequency resonant inverter – 1.5 kW
Input Voltage	115/230 VAC, 50/60Hz
kVp Range	40 – 100 kVp, adjustable in 1 kV increments - closed loop regulation
mA Range	Fixed, 15 mA - closed loop regulation
mAs Range	0.15 - 60
Indicators	Digital display of kVp and mAs. X-Ray, Ready and Fault indicators.
Exposure Switch	Detachable two-position
<u>X-Ray Tube</u>	Stationary Anode 100 kVp
Filtration	2.7 mm al minimum
Target Material	Tungsten
Anode Capacity	20,000 HU Storage
Focal Spot	1.0 mm
Target Angle	15°
<u>Collimator</u>	Advantech R72/32-ET
Tape Measure	SID Measurement
Inclinometer	Angle Measurement
<u>Travel Stand</u>	
Min. F/S to Floor	13" / 33 cm
Max. F/S to Floor	78" / 198 cm
Hor. Ext. of F/S	21" / 53 cm
Hor. Rotation	200°
Tube Rotation	270°
<u>System Weight</u>	70 lbs. / 31 kG



Model SR-130

SPECIFICATIONS

<u>Generator</u>	High frequency resonant inverter – 3.0 kW
Input Voltage	115/230 VAC, 50/60Hz
kVp Range	40 – 100 kVp, adjustable in 1 kV increments - closed loop regulation
mA Range	Fixed, 15 mA and 30 mA - closed loop regulation
mAs Range	0.15 - 120
Exposure Time	0.01 – 4.00 seconds
Indicators	Digital display of kVp, mAs and Time. X-Ray, Ready, mA Station and Fault indicators.
Exposure Switch	Detachable two-position
<u>X-Ray Tube</u>	Stationary Anode 110 kVp
Filtration	2.7 mm al minimum
Target Material	Tungsten
Anode Capacity	30,000 HU Storage
Focal Spot	1.0 mm
Target Angle	15°
<u>Collimator</u>	Advantech R72/32-ET
Tape Measure	SID Measurement
Inclinometer	Angle Measurement
<u>Travel Stand</u>	
Min. F/S to Floor	13" / 33 cm
Max. F/S to Floor	78" / 198 cm
Hor. Ext. of F/S	21" / 53 cm
Hor. Rotation	200°
Tube Rotation	270°
<u>System Weight</u>	100 lbs. / 45 kG



800-356-3388
978-374-6371
Fax - 978-521-2214

49 Newark Street
Haverhill, MA 01832
sales@associatedxray.com
www.associatedxray.com