

DEL MEDICAL



OTC18^M

OVERHEAD TUBE CRANE SYSTEM



System Overview

Clinical Performance

Versatile and intuitive, the OTC18M System delivers enhanced patient comfort and optimized workflow. Precisely designed to withstand high-volume throughput in hospital radiology departments, medical imaging centers and large orthopedic facilities with the need to perform a broad range of radiographic studies.

Our overhead tube crane features a sophisticated LCD touchscreen console, which supports enhanced capabilities to offer a more genuine patient experience. By integrating with a DELWORKS DR System and compatible generator, technologists are given the ability to adjust generator technique factors without leaving the patient's side. Its overhead horizontal and transverse tracks provide technologists with limitless imaging procedure capability, including cross-table laterals and other challenging views.

The system embraces operational efficiency through ergonomically designed user controls, extensive longitudinal and transverse travel, and an industry-leading table with a patient weight capacity of up to 800 lbs. The OTC18M System was developed through innovation to produce high quality diagnostic images with ease. Built in the USA, it is prepared to deliver many years of continuous use and exceptional user-satisfaction.

System Includes

- ▶ Overhead Tube Crane with Automatic Collimator (Vertical Tracking Version Available)
- ▶ EV800 Four-Way Elevating Float Top Table
- ▶ VT300 Tilting Wall Stand (VS300 optional)
- ▶ High Frequency Generator
- ▶ DELWORKS DR System

Key Highlights



Technologist-Friendly LCD Touchscreen



Electromagnetic Braking



Premium Table and Wall Stand



Integrated Workflow



Fixed and Wireless DR Detector Options



Dose Management Configurations



System Features

Intuitive Control and Flexible Positioning

The OTC18M ceiling-mounted tube crane highlights an advanced, technologist-friendly touchscreen console providing seamless operation of your radiographic system by displaying tube angulation, SID values, and customizable generator controls. Color-coded movement identification buttons provide optimal precision when setting up views. Peaceful and effortless movements are controlled by an electromagnetic braking system enabling fast and secure readjustments of the tube head. Its five-tier telescoping column delivers exceptional vertical movement of 71" (180 cm), capable of performing complete head-to-toe radiographic procedures including upright weight bearing and recumbent tabletop exams.



Easy to Use

A conveniently placed all-lock release sensor is located just above the bottom section of the tube head handle. This sensor enables rapid manual positioning by allowing the user to grab the bottom handle to unlock the system and make swift readjustments.



Auto-Collimation

Accelerates patient positioning and reduces radiation exposure by automatically selecting the proper field-of-view for each body part. This feature is available through the DelWorks DR acquisition software's pre-programmed APR settings.



Powerful Integration

The OTC18M System is powered by a compact and robust CMDR generator, available in 50, 65 and 80 kW models. The generator is fully integrated with the DelWorks DR Workstation, creating a streamlined workflow and enhancing dose efficiency.



23" Touchscreen Monitor



Designed for performance, built for longevity

Elevating Four-way Float Top Table

The durable EV800 elevating four-way float top table delivers outstanding safety and usability. Featuring an exclusive four-point lift system and exceptionally quiet motor-drive, its completely flat, smooth, scratch resistant tabletop lowers to a height of just 22" to ensure stress-free patient transfers and adjustments. Offering a high patient weight capacity of up to 800 lbs (363 kg), stable continuous movement is possible through conveniently placed recessed foot treadles and table-side controls, suitable for increasing technologist performance and satisfaction.



Accessories and Upgrades



▶ Table Side Handgrips

These sturdy handgrips can be mounted along the entire length of both sides of the tabletop to enhance patient safety.



▶ Lateral Cassette Holder

This adjustable holder can be mounted along both sides of the tabletop allowing for access to a variety of cross-table lateral views.



▶ Compression Band

This compression device is used to safely secure patients to the tabletop.

Tilting Wall Stand

The VT300 wall stand features a tilting image receptor, promoting comfort and precision for standing or seated examinations. Every adjustment is precisely counterbalanced to allow smooth operation with light effort applied by the technologist. This makes the VT300 accommodating to all users regardless of size or strength.



Rotating Tray * optional upgrade

The easy-to-use rotating tray enables manual rotation of the DR detector for use inside both table and wall stand. The stable one-handed operation supports fast portrait-to-landscape positioning without ever removing the detector from the tray. Fully extended steel slides activate locking mechanisms to assure detector protection when loading and unloading. Designed to accommodate a wide array of ISO 14" x 17" cassette-sized detectors.



DR Features

High Quality Images, Reduced Patient Dose

DELWORKS

DELWORKS is a powerful image acquisition and processing software featuring a user-friendly interface that provides sophisticated and speedy medical imaging. Designed with complex system automation, DELWORKS aims to simplify the examination process by making the difficult decisions for you.

Its advanced anatomical programming and image processing algorithms help optimize technologist productivity. DELWORKS strives to minimize human error and unwanted repeat exams to give technologists the highest quality image at a lower dose, with every exposure.

Software Features

- ▶ Pre-exposure display of patient and procedure information, X-ray generator exposure factors, status and control functions integrated into a single display screen
- ▶ Exam-specific image processing algorithms automatically optimize images based on selected patient anatomy
- ▶ Enhanced image processing parameters. APR specific default values and manual adjustment, if desired
- ▶ Image rotation in 90° steps, horizontal mirroring, automatic and manual image cropping to collimated area
- ▶ Easy verification and correction of image laterality and patient orientation

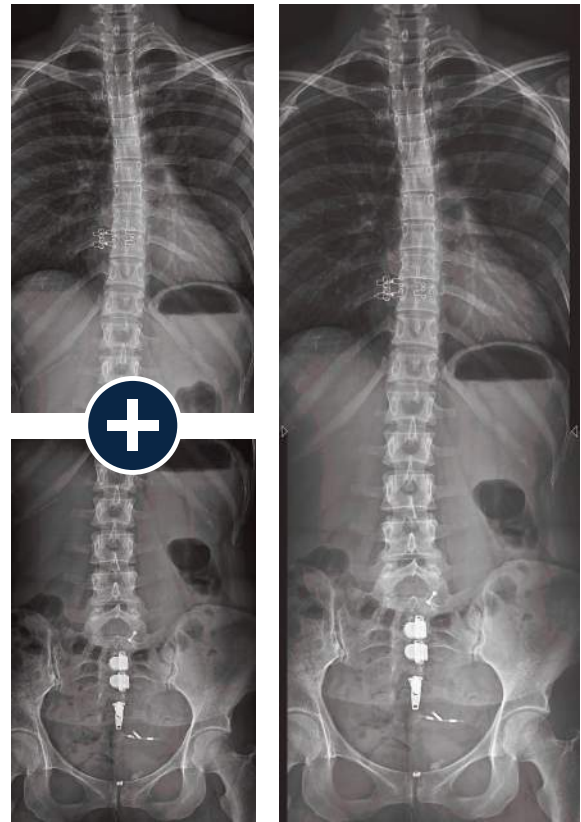


Image Stitching

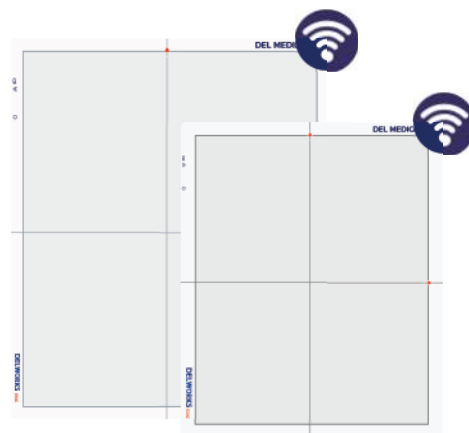
The optional image stitching application requires no unnecessary preprogramming or additional equipment, making full-length spine studies effortless and accurate.

- ▶ Intuitively add orientation markers and text comments directly to acquired images (pre-defined or free text)
- ▶ Detailed histograms of pixel density
- ▶ User selection of modified LUT (Look-Up Table) based on various exam types
- ▶ Manual adjustment of the LUT, window and level
- ▶ Effectively manage rejected images

Premium Detectors Available in Single, Dual, or Multi-Detector Applications

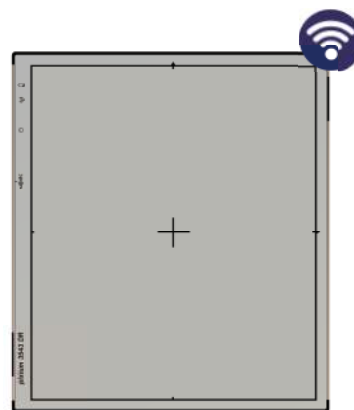
E14C Wireless Detector

The E14C is an ultra-light, portable 14" x 17" (35 cm x 43 cm) wireless detector with outstanding image quality, offering the compact versatility needed to optimize workflow. The E14C has an internal accelerometer that automatically senses motion and takes the detector in and out of ready mode, extending its battery life.



E24C Wireless Detector

The E24C is a compact 24 cm x 30 cm version of the E14C detector that is ideal for small anatomy and pediatric imaging.



E14Ce Wireless Detector

The E14Ce is an economical and technology rich wireless 14" x 17" (35 cm x 43 cm) detector option with Cesium Iodide.

EasyConnect

DELWORKS wireless detectors feature EasyConnect — an Auto Exposure Detection (AED) technology that keeps the detector in a standby mode, awaiting exposure from any X-ray source. Once the exposure is detected it instantly captures the X-ray image and transmits it wirelessly to the system workstation.

E17C Fixed Detector

The E17C fixed, 17" x 17" (43 cm x 43cm), large format flat-panel detector is designed to minimize technologist interaction with upright exams in a dual or multi-detector configuration. It is easy to integrate into all types of X-ray systems and delivers both quality images and fast exams for increased productivity.



Technical Specifications

OTC18M Tube Crane

Vertical telescopic travel range:	70.8" (180 cm) with minimum 32.7" (83 cm) focal spot to ceiling distance / 15.5" (39.4 cm) focal spot to floor distance with a 9' ceiling height
Longitudinal travel range:	Standard 14' rail included, 136.2" min. (346 cm) With optional rail extensions: 219.9" max (558.5 cm)
Transverse travel range:	Standard 10' Bridge with 9.8' (0.3 cm) transverse carriage: 86.6" min. (220 cm) With 13' bridge & 13.1' (0.4 cm) transverse carriage: 139.7" max. (355 cm)
Longitudinal detent positions:	Configurable during installation
Tube rotation range (horizontal axis):	-120°, +120°, Detent positions at -90°, 0°, +90°
Tube rotation range (vertical axis):	-182°, +154°, Detent positions at -180°, -90°, 0°, +90°
Weight:	Approximately 507 lbs. (230 kg) with tube & collimator
Power requirements:	100-240 VAC 50/60 Hz, 3.6 Amps

EV800 Radiographic Table

Patient load capacity:	800 lbs. (363 kg)
Table base length:	53" (135 cm)
Table base width:	25" (64 cm)
Total tabletop movement:	Longitudinal, 39.5" (100.3 cm) Transverse, 12.75" (32.3 cm)
Variable height:	22.25" (56.5 cm) to 34.25" (87 cm)
Total Bucky travel:	15.5" (39.3 cm)
Tabletop length:	86.5" (220 cm)
Tabletop width:	36" (91 cm)
Weight:	563 lbs. (256 kg)
Power requirements:	120/230-240 VAC 50/60 Hz
Options:	78" (198 cm) tabletop length / 32" (81 cm) tabletop width / Lateral cassette holder / Table-side patient handgrips / Rotating cassette tray

VT300 Wall Stand

Receptor tilt range:	+90° / 20°
Vertical travel range, vertical receptor:	15.5" (39.4 cm) to 71.1" (180.6 cm)
Vertical travel range, +90° receptor:	Minimum 25.5" (64.8 cm)
Height:	82.24" (211 cm)
Depth, vertical receptor:	30" (76 cm)
Receptor width:	27.25" (69.2 cm)
Receptor height:	26.5" (67.3 cm)
Weight:	765.5 lbs. (347.2 kg)
Weight, without counterweights:	368.5 lbs. (167 kg)
Power requirements:	120/230-240 VAC 50/60 Hz
Options:	8" (20 cm) extension box / Overhead patient handgrips / Rotating cassette tray

