



Glass-Free Detector

A New Solution to Make DR Imaging Easier



Less is Better - Optimize Functionality

To improve imaging workflows, Samsung introduces its new flagship detector, AccE Glass-Free Detector. It is designed to relieve user fatigue with ultra-lightweight design by replacing a glass-based substrate with a non-glass flexible panel. This glass-free technology not only makes it 27% lighter than the conventional model[†], but also does not compromise the image quality with high DQE (76% @0lp/mm).

NEW

Lightweight
approx. **2** kg[‡]
(4.5 lbs)



AccE Glass-Free Detector offers **high-resolution** images with a **lightweight and easy to carry** design



Less User Fatigue
with Lighter Weight



High Image Quality
with High DQE



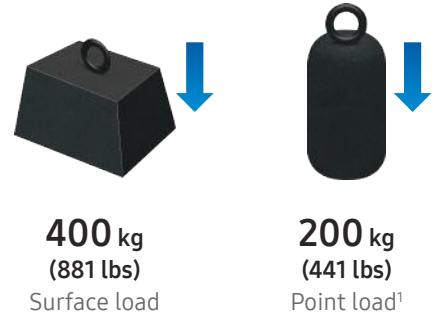
Dust and Water
Resistant (IP54)

[†] Compared to S4335-AW without battery set
[‡] Measured without battery set

Reliable in Versatile Environments

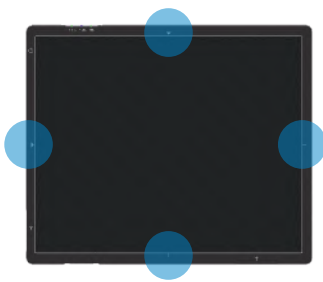
Impressive load allowance along with dust and water resistance allows the detector to be actively implemented in versatile environments. Its robust design will help reduce user concerns when using the detector in complex areas such as ER and OR.

1) Based on 40 mm diameter disc at the center



Enhance Your Daily Workflow

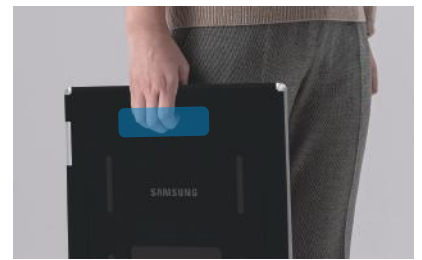
The user-centric designs of the detector deliver work efficiency and portability, alleviating daily burdens.



CENTER-ENGRAVING
to help position the patient



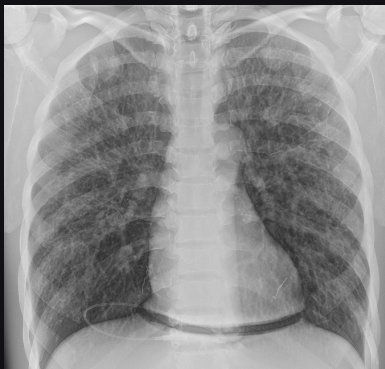
SIDE CHAMFER
to ease your lifting



REAR GRIP
to support transportation

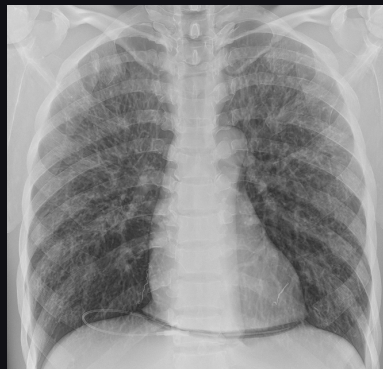
Case. Chest AP (Adult Phantom)

Images were taken with GM85.



AccE Detector
S4335-AW

(SID 110 cm / 80 kvp / 1 mAs)



AccE Glass-Free Detector
F4335-AW

(SID 110 cm / 80 kvp / 1 mAs)

Maintain Image
Quality with
high DQE

