



# TAU 15 | 12


Exceptional imaging  
begins here

# ANATOMY REVEALED.


**1. LIVE IMAGE SIZE** | Expect exceptional diagnostic imagery with a 10" x 8" live image to see fine details of anatomy with vivid clarity.


**2. 24" MONITOR** | See more on-screen content with a resolution of 1920 x 1080 in bright detail for an immersive imaging experience.

**3. ORTHOTOUCH™** | Advanced touchscreen interface.

 Color interface

 Anatomical selections

 Touch support

 Pediatric software

**4. ON-SCREEN HELP** | Description of common system functions available directly on-screen.

**5. MONITOR ARM** | Allows for easy adjustment of monitor and keyboard for viewing of anatomy while sitting or standing.

## Intelligent Dose Reduction

### *Do more. Dose less.*

At Orthoscan, we understand your concern about radiation exposure and the demand for high-quality images. That's why the TAU family includes cutting-edge Intelligent Dose Reduction technology that provides the best in diagnostic image quality while reducing exposure to you and your patients.

# IMAGING, EVOLVED.



## Over-rotation

A mini C-arm that works with you, not against you

An expanded orbital rotation of 160° allows preferred views of anatomy to be obtained without patient discomfort. Whether you're imaging children or adults, a 20" arc depth provides the necessary space to position patients of all sizes. Get all the flexibility you need with an improved umbilical cable, allowing you to easily maneuver the C-arm in the surgical field. Combined, these features simplify and improve your work flow.

## Size and storage

Big capability, small size

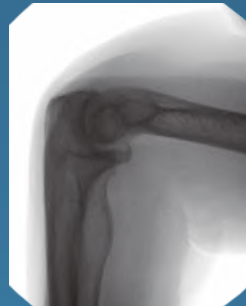
Lighter and smaller than competitive equipment, Orthoscan's TAU family is keeping the mini C-arm mini. While in compact mode, storage and maneuvering through restrictive spaces is effortless and a 3-way braking system provides mobility and stability during positioning.



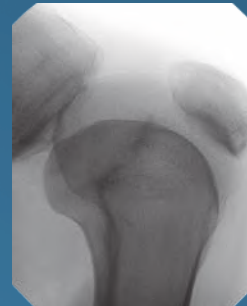
Hand Imaging



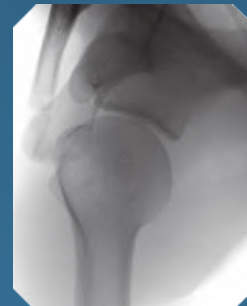
Foot Imaging



Elbow Imaging



Knee Imaging



Shoulder Imaging

## OPTIMIZED DOSE FILTER

- Only mini C-arm with pediatric indication
- Reduced dose while maintaining image quality
- Reduced exposure to surgeons & patients

+



## NEXT GENERATION FLAT PANEL DETECTOR

- Increased workflow & efficiency
- Improved image brightness & quality
- Dose reduction & decreased ramp time
- Mag Mode maintains image quality without dose increase



## PEDIATRIC INDICATION

Designed for use with pediatric patients



## BILATERAL CONTROLS

Improved functionality for the sterile field with back-lit controls



## SURGICAL LED LIGHTS

Provides additional illumination on the anatomy



## ENHANCED SECURITY

Work confidently with protected data in the modern healthcare environment

Up to  
**66%**  
Cumulative  
Dose Reduction  
can be achieved\*\*

## MONITOR

Display size	24" LCD
Primary "live" image	10" x 8"
Dual reference image	5" x 4"
HDMI	✓

## DETECTOR

Type	Flat Panel Detector
Image resolution	1400 x 1100
Pixel spacing	100 Microns

## X-RAY GENERATOR

kV range	40 - 78 kVp
mA range	0.040 - 0.160 mA
Operating mode	Continuous

## ELECTRICAL

Sterile field controls	Bilateral
Multifunction wireless foot switch	✓
Laser alignment	✓
Surgical LED lights	✓

## DOCUMENTATION

Wireless communication	Optional
DICOM 3.0 compliant	✓
Printer	✓

## MECHANICAL

Weight	475lb
Height	48"
Footprint (W x L)	29" x 33"



# ADDITIONAL FEATURES.

**1. USER-FRIENDLY CONNECTIVITY** | Easy access to the power button and I/O ports directly on top of the chassis.

**2. THREE-WAY BRAKE CONTROL** | Maneuver your system with ease down hallways, around corners, and in the operating room.

**3. INTEGRATED CABLE PUSHERS** | Protects power cords and other cables from being damaged.

**+ UPGRADED SERVICEABILITY** | Redesigned from the inside out to reduce service maintenance time.

**+ KEEPING IT MINI** | A lightweight frame in addition to compact design simplifies storage and transportation in restrictive hallways or rooms.



*Orthoscan and Orthotouch™ are registered trademarks of Ziehl Inc. All rights reserved. \*Using Intelligent Dose Reduction (with C reduction possible with that offered in pulsed fluoroscopy. In clinical consultation with a radiologist and a physicist should be made to*



**MEDICAL X-RAY SYSTEMS  
EQUIPMENT • SUPPLIES • SERVICE**  
800-356-3388

Associated X-Ray Imaging Corp.  
49 Newark Street  
Haverhill, MA 01832

Toll Free: 800-356-3388  
Phone: 978-374-6371  
Fax: 978-521-2214

www.associatedxray.com  
sales@associatedxray.com

