

REVEAL MOBI LITE

With *SpectraDR*® Technology

YOUR **MOBILE** SYSTEM
CAN BE A **3-IN-1** SOLUTION



Mobi Lite fully integrates Reveal 35C to offer 3 images from a single exposure - and without motion artifacts.

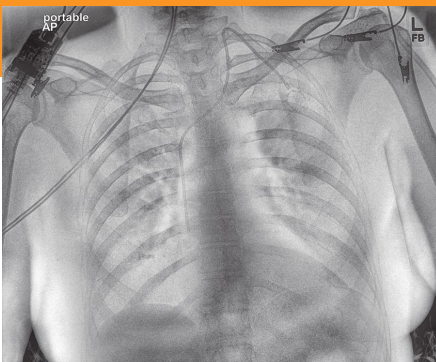
Powered by *SpectraDR*® technology, the Reveal™ 35C detector provides **three** images with **zero** motion artifacts for improved visualization of line and tube tips, retained surgical objects, pneumothorax, bedside pneumonia, and more³.

Paired with the Reveal 35C detector, the Mobi Lite system becomes a high-quality mobile dual-energy solution for accurate and fast diagnoses in mobile settings.



1 EXPOSURE. **3** IMAGES.
0 MOTION ARTIFACTS.

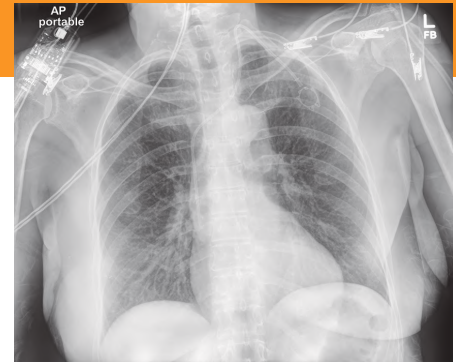
-  Better hospital and patient outcomes
-  Increases revenue through incidental findings; protects revenue by reducing outflows



BONE IMAGE



SOFT TISSUE IMAGE



TRADITIONAL DR IMAGE

Portable images taken with the Reveal 35C detector.



MOBI LITE: PERFORMANCE MOBILE SYSTEM FOR FLEXIBLE APPLICATIONS

- Lithium batteries with fast charging time
- 300+ shots with one charge
- Lightweight (<300kg)
- Easy to drive with one hand
- Anti-collision sensors
- Forward and backwards fully motorized system movement
- Wide rotation of the tube support arm
- Large screen for image preview

REVEAL 35C: SAME DOSE. SAME WORKFLOW. MORE BENEFITS.



43% more lesion visibility when dual-energy images were included¹



33% more pneumonia cases found compared to X-ray thanks to dual-energy images²



Increased confidence in **57%** of ICU cases thanks to dual-energy images with no added reading time⁴



Better visibility of lines and tube tips⁴

1. S. L. Maurino, K. S. Karim, V. Venkatesh. Diagnostic value of single-exposure dual-energy subtraction radiography in lung lesion detection: initial results. European Congress of Radiology-ECR 2022, 2022

2. Sanchez F, Kandel S, May M, Ronghe S, Rogalla P. Diagnostic value of dual-energy chest x-ray in immunocompromised patients to rule out pneumonia: initial results. European Congress of Radiology-ECR 2021, 2021

3. Visit <https://www.kaimaging.com/science-center/reveal-technology/> for more information and references on dual-energy.

4. Rogalla P, Karim K. Added diagnostic value of portable dual-energy chest X-ray in a non-radiological reviewing environment. Radiological Society of North America-RSNA 2022, 2022



Associated X-Ray Imaging Corp.
49 Newark Street
Haverhill, MA 01832

Toll Free: 800-356-3388
Phone: 978-374-6371
Fax: 978-521-2214

www.associatedxray.com
sales@associatedxray.com

