

# Our Focus is **YOU**

**Your focus is your patients. Our focus is providing what you need for a confident diagnosis.**

Every day, you focus on making timely diagnoses and treatment plans that ensure a high standard of patient care, while Konica Minolta Healthcare focuses on helping you.

Our next-generation, compact, point-of-care ultrasound system, the **SONIMAGE® MX1 Platinum**, allows you to make quick and confident decisions at the patients' bedside. This powerhouse system transforms patient care through innovative tools and technologies that empower you to streamline workflow and provide the highest quality of care...leading to better decisions, sooner.



**KONICA MINOLTA**



# Our commitment – help you improve patient care and clinical outcomes

Konica Minolta developed the **MX1 Platinum System** to deliver superior imaging in a compact device that's fast, precise and easy to use. You can count on us to provide you with technology that facilitates immediate diagnoses, as well as extensive training, unmatched customer care and the technical support to improve workflow.



## Confident Diagnosis through superior image detail

**The MX1 Platinum System** is a powerhouse in performance, leveraging an advanced imaging algorithm that achieves improved resolution and crystal-clear image quality, all while maintaining frame rate. This powerful algorithm improves image quality of both the color and grayscale modes, delivering speckle reduction and a smoothing effect to reduce graininess, even on a compact monitor. This sophisticated imaging empowers decision-making and accurate interventions, elevating patient care.



## Built for **Confident Diagnosis** across point-of-care specialties

A full suite of transducers accompanies the **MX1 Platinum System**, for a broad range of applications that meet the diverse demands of your department and ever-changing patient needs.

### Wideband Frequency Linear Transducers

The **SONIMAGE® MX1 Platinum L18-4** is a broad frequency linear probe that offers both near-field resolution and deep penetration for scanning of both superficial and deep joints and structures for more precise diagnosis.

The **HL18-4** hockey stick linear transducer is especially suited to MSK and pain management applications, with the ability to reach difficult to access areas with a small footprint and maneuverability.

Deliver exceptional patient care in preoperative environments throughout the care path with the **SONIMAGE MX1 Platinum S4-2** phased array transducer.\*





## Designed with tools to streamline your day-to-day workflow and increase efficiency

With a simple, intuitive interface, the **MX1 Platinum System** is easy to use, whether you're a novice or an experienced pro. Automated tools accelerate clinical workflow and streamline repetitive tasks, helping you work more efficiently.

Vascular NAVI automatically adjusts the doppler cursor position, gate size, angle correction and steering angle. Easy to use with all linear transducers, the vascular workflow solution software optimizes blood flow volume measurements and vascular access.

## Efficient patient assessment in point-of-care environments

Extreme portability and exceptional image quality converge on the **MX1 Platinum System**. This ultrasound system was designed to bring efficiency and exceptional imaging to the places you need it most, at the point-of-care, with an extended battery life enabling 2 hours of continuous scanning time.



# SONIMAGE MX1 Platinum



## Elevating Outcomes Through Innovation

Accurate documentation and communication are essential for elevating patient care. Konica Minolta Healthcare offers clinicians innovative features to improve documentation and review of the ultrasound exam, delivering results more efficiently.

The **Camera Function** on the MX1 Platinum System delivers picture-in-picture on the ultrasound image for improved documentation and review. Through a USB external camera, both the clinical and camera images are stored simultaneously, while the built-in microphone enables voice messaging and note dictation.

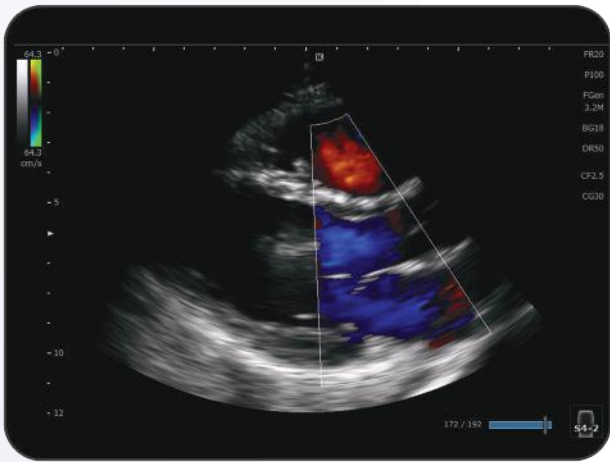
The **Library Function** enables viewing of saved clinical images and cine clips, allowing you to learn from past scans and procedures, improve exam documentation, and increase education and patient communication.



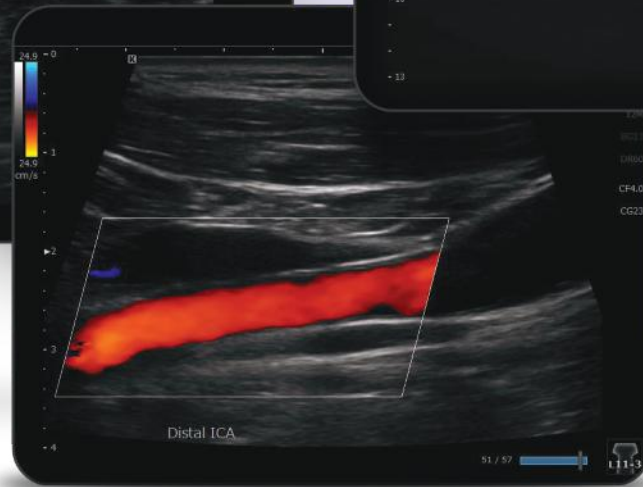
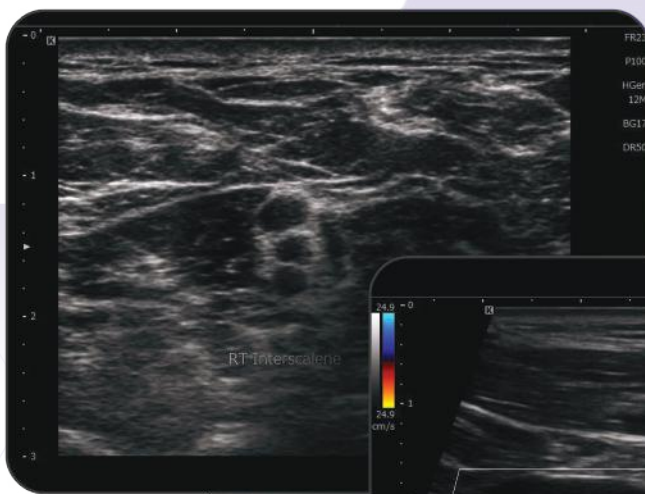
## Enhance Your **VISION** for Better Patient Care

Advanced needle visualization tools take the guess work out of interventions with the **MX1 Platinum System. SNV<sup>®</sup>**, **Simple Needle Visualization** software, is an advanced algorithm combining in-plane and out-of-plane methods to improved needle visibility. The SNV feature increases accuracy in needle placement, making it the ideal solution for guided injections in pain management and MSK interventions.





**The MX1 Platinum System**, with exceptional cardiac imaging and ease of use, is the optimal solution for quick visualization and evaluation of the heart at the bedside. The new sector-phased array (S4-2) is not only optimized for superior M-mode and CWD-mode imaging, but also for precise measurement.



**MEDICAL X-RAY SYSTEMS**  
EQUIPMENT • SUPPLIES • SERVICE  
800-356-3388

Associated X-Ray Imaging Corp.  
49 Newark Street  
Haverhill, MA 01832

Toll Free: 800-356-3388  
Phone: 978-374-6371  
Fax: 978-521-2214

[www.associatedxray.com](http://www.associatedxray.com)  
[sales@associatedxray.com](mailto:sales@associatedxray.com)