

HITACHI
Inspire the Next

OASIS™

THE HIGHEST FIELD STRENGTH OPEN MRI



OASIS™

1.2T Superconducting Magnet
Highest field strength open MRI

Open Architecture
Unlimited lateral opening
provides free range of motion
and high patient accommodation

Dual Side Controls
Improves operator efficiency
and convenience

Zenith RF Technology
Coils enclose anatomy for
high signal and uniformity



The Oasis 1.2T MRI system sets a high standard for patient-centric care. A unique achievement in high-performance imaging, the Oasis truly open architecture features advanced magnet design, Zenith RF Technology and robust clinical capabilities.

With an unobstructed viewing angle and the industry's most accommodating patient table, even the most challenging patients can be handled with confidence, without compromising on safety, performance, or efficiency.

Higher Order Active Shim Technology (HOAST)

Consistent uniformity and fat saturation for all patients

Asymmetrical Table Alignment

Provides 270° outlook angle from iso-center

82cm Wide Patient Table

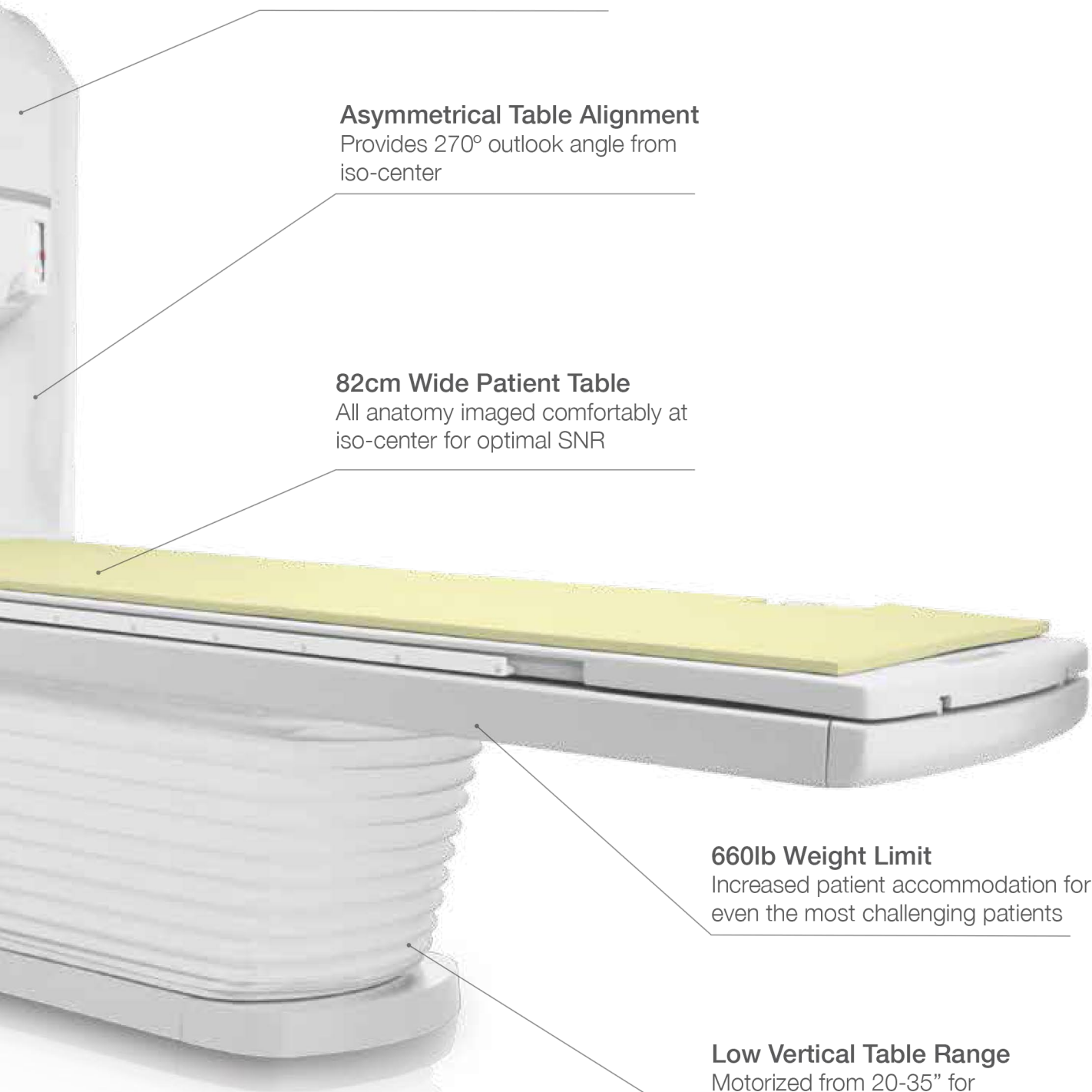
All anatomy imaged comfortably at iso-center for optimal SNR

660lb Weight Limit

Increased patient accommodation for even the most challenging patients

Low Vertical Table Range

Motorized from 20-35" for easy access





Oasis Open High-Field Imaging

Hitachi has been a leading pioneer of patient friendly MR systems, demonstrated by open MR innovations for over 25 years. Now with Oasis 1.2T - the highest field strength open MR in the industry - we offer high field imaging with the greatest degree of patient-centric features that minimize obstacles and delays associated with scanning challenging patients.

Oasis will enable you to capture and retain the broadest patient demographic, and reach your market potential. With the combination of unmatched patient comfort, high field strength, efficient workflow and a 99% uptime guarantee, Oasis 1.2T completes your imaging portfolio ensuring all patient referrals can be comfortably handled with the best diagnostic results available.

Outstanding Comfort Delivers Outstanding Quality

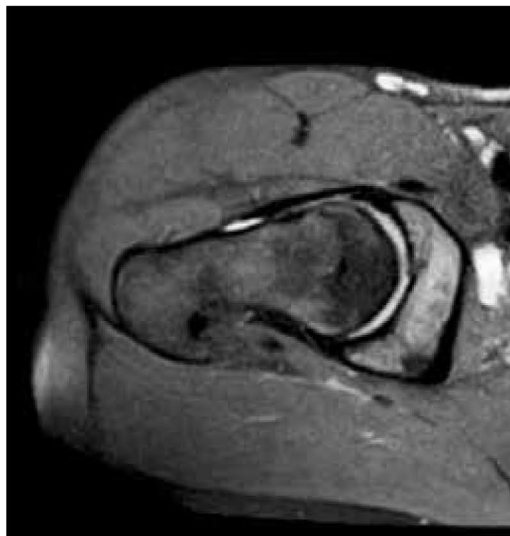
The powerful, cutting edge Oasis imaging architecture delivers its outstanding clinical imaging benefits including a broad range of pulse sequences, sequence enhancements, analysis capabilities, and post processing tools to ensure high diagnostic performance.



The Vertex II computer and Origin MRI operating software deliver advanced imaging capability and efficient workflow

Musculoskeletal Imaging

Only the Oasis allows all anatomy to be imaged at iso-center for remarkable RF fat saturation and inherent high SNR, complimented by HOAST. Isotropic sequences (isoFSE) enable reformats into high-resolution oblique and thin slice data sets for viewing intricate anatomy. Variable bandwidth sequences like primeFSE enable fast and effective implant imaging.



Proton density with RF fat saturation



8 cm FOV with 2.5 mm slice thickness

Neuro Imaging

The vital pulse sequences, acquisition features and post processing tools for high-quality imaging of head/neck and spinal structures are standard on Oasis. ADAGE (combined gradient echo) and isoFSE deliver high contrast, high SNR acquisitions providing detailed visualization of spinal abnormalities. Advanced neurological imaging includes susceptibility imaging, perfusion, spectroscopy and more.



RADAR T2 FSE



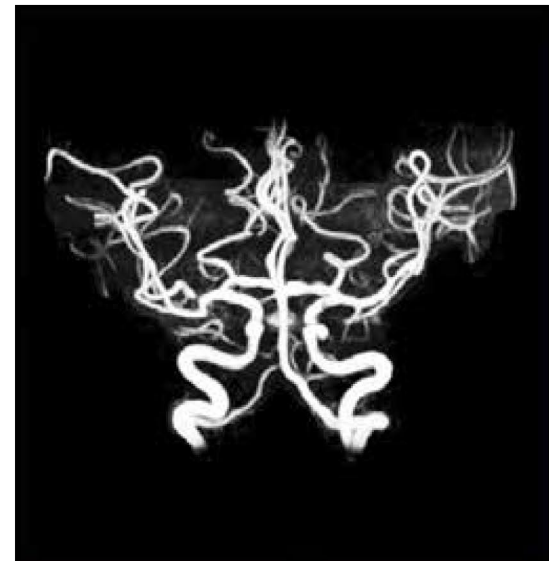
3D primeFSE acquisition with volume rendered reformat

Vascular Imaging

A diverse suite of angiography capabilities including conventional 2D/3D TOF, advanced acquisition techniques such as the VASC suite for comprehensive non-contrast imaging, and 3D vessel post processing features provide the tools you need in this fast-growing application segment. Advanced techniques like SIR-Map, Hitachi's exclusive carotid plaque imaging capability set Oasis apart.



VASC-ASL non-contrast MRA



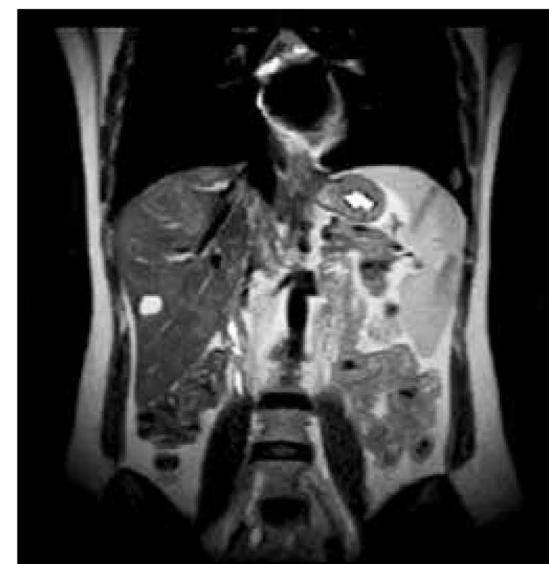
High resolution 3D TOF

Body Imaging

High SNR from a 1.2T magnet and Zenith RF coil technology is complemented by fast imaging techniques including RAPID parallel imaging and TIGRE dynamic imaging, while Hitachi's RADAR provides robust compensation for involuntary motion. Customized scanning protocols for pelvis, MRCP, kidneys and liver imaging, as well as cardiac, breast and prostate acquisitions round out a comprehensive body suite.



TIGRE dynamic breast imaging



T2 FSE single-shot breath-hold in 16 seconds



Pediatric

Continuous contact during the exam



Bariatric

Comfortably image the largest patients



Geriatric

Easy patient access to reduce stress and worry



Claustrophobic

Open, approachable, relaxing

Designed for Challenging Patients

No matter how challenging the patient or situation, Oasis is designed to simplify imaging difficult patients including pediatric, bariatric, geriatric and claustrophobic. The widest patient table, unlimited lateral opening, robust motion compensation are just a few of the features that make all patients more comfortable and relaxed during the scan.

RADAR motion compensation enables high quality imaging while reducing the need for re-scans for pediatric and geriatric patients where motion is an obstacle. The large opening and unobstructed view help alleviate concerns of claustrophobic patients while increasing accommodation of bariatric patients. All of these challenges derive from anxiety and access, and Oasis makes scanning all these patients more comfortable and efficient.

Industry Leading Support Services

Imaging professionals continue looking to Hitachi for exceptional imaging systems and lifecycle value. Oasis comes with an assurance of success in achieving business goals while offering the highest standard of care. From maximizing equipment uptime, through maintaining optimal image quality from patient to patient, to helping you market your MRI imaging service, you'll find Hitachi delivers benefits not found anywhere else:

Seamless Planning, Installation, and Maintenance

Site Planning

With thousands of successful installations, our team provides timely and efficient Oasis placement every step of the way. And our site planners are backed by Hitachi-trained engineers who bring your system to optimal performance through final factory specification.

Remote Diagnostics

The immediacy of Sentinel™ Remote Diagnostics provides advanced capability for our technical center to remotely access your system. Our experts can send and receive images, run diagnostics, look at raw data, read error messages, monitor operating parameters and more.

99% Uptime Guarantee

Expect reliability. Your system is running 99% of the time during every quarter or you receive an additional month of service at no cost.

Applications and Training Support for Immediate Efficiency

On-Site Unlimited Applications

Initial applications training comes in a comprehensive two-week program. However, we don't stop there. You can take advantage of unlimited access to clinical applications support as you need it.

Call Center Support

Applications phone support is available from 8:00 a.m. to 9:00 p.m. EST, Monday through Friday, and is staffed by Hitachi-experienced MRI technologists, ready to help you with your clinical challenge.

Training Classes

The Hitachi Institute for MRI Technologists (HITS) is designed to prepare technologists for initial on-site training, educate new users to MRI principles or to assist experienced personnel with Hitachi MRI System's capabilities.

Accreditation Support

Hitachi provides a highly informative Hitachi specific Accreditation Guidebook. Additionally, we will assist you in collecting technical equipment performance data, phantom testing, and we are available to advise you on all aspects of the accreditation programs via the Applications Helpline.

Comprehensive Marketing Assistance

Customer Marketing

Hitachi knows to have a commercially successful MRI business, you have to do much more than simply open your doors. That's why we provide an array of marketing tools to promote your facility to both referring physicians and patients alike. The Oasis Marketing Guide includes referring physician and patient education materials, press releases, photography and more.

In addition to basic marketing support, Hitachi offers the Advanced Marketing Program (AMP) to Oasis customers. This is a strategic level program uses your facilities logo, colors and branding and requires no creative or development cost. Some of the Hitachi AMP benefits are:

- Strategic briefing
- Copy writing assistance
- Patient downloads for web site
- Print ad creation
- Introduction materials
- Posters
- Billboard design
- Referring physician sheets
- Flash Ads
- Mailer design
- Product banners for web site
- And more





Hitachi Medical Systems America, Inc.

1959 Summit Commerce Park
Twinsburg, Ohio 44087 USA
Tel: 330.425.1313 800.800.3106
Fax: 330.425.1410
www.hitachimed.com

Hitachi Medical Corporation

4-14-1 Akihabara UDX
Soto-Kanda, Chiyoda-ku
Tokyo, 101-0021 Japan
www.hitachi-medical.co.jp

© 2014 Hitachi Medical Systems America, Inc. All rights reserved.

1014/1000/DM#48849 v4
Printed in U.S.A.

Hitachi reserves the right to change specifications described herein without prior notice. This document provides general technical descriptions of both optional and standard features.



800-356-3388
978-374-6371
Fax – 978-521-2214

49 Newark Street
Haverhill, MA 01832
sales@associatedxray.com
www.associatedxray.com