

**DEL MEDICAL**



# ***FWFC***

FLOOR/WALL TO FLOOR/CEILING  
DIGITAL RADIOGRAPHIC SYSTEM



# System Overview

## Affordable Quality and Reliability

The Del Medical FWFC System offers an affordable, flexible solution designed for medical imaging centers and urgent care facilities looking to maximize space and minimize room modifications. Its secure floor and wall-mounted rails allow for effortless longitudinal travel and quick positioning.

The FWFC System might be the most affordable radiographic system in the Del Medical product line, but its outstanding build quality and performance make it a perfect fit for low throughput facilities looking to enhance their diagnostic imaging capabilities. Built in the USA, it is prepared to deliver many years of continuous use and exceptional user-satisfaction.

## System Includes

- ▶ FWFC Tube Stand
- ▶ RT100 Four-Way Float Top Table
- ▶ VS100 Wall Stand
- ▶ High Frequency Generator

## Optional

- ▶ DELWORKS DR System

## Key Highlights



Electromagnetic Safety Locks



Rotational Tube Column



Space Efficient Table and Wall Stand



Powerful High Frequency Generator



Integrated Workflow



Fixed and Wireless DR Detector Options



Dose Management Configurations



## Compact Precision

The FWFC rotating tube stand offers exceptional versatility and accuracy. Its pressure-activated 180° column rotation, centering detent, electric vertical and longitudinal locks, and 9-inch transverse travel provide technologists with fast positioning and comprehensive accessibility.

## RT100 Four-Way Float Top Table

The RT100 table features a 700 lbs. patient weight capacity and a stain-resistant floating tabletop which glides freely on a precision roller bearing system. Float top movements are safely controlled by heavy-duty electric locks, activated by a conveniently placed foot treadle release. The 17" x 17" standard cassette tray can accommodate any cassette sized detector with ease. Its all-steel structure and welded base provides maximum strength and reliability. In addition, the RT100's base can be used to store Anthem generator electronics, making it a great space saver for tight room layouts.

## VS100 Wall Stand

The ultra-compact VS100 upright is powered by an electric lock release handle and dual counterweight cables for added patient and user safety. Its expansive vertical travel of 58" (148 cm) enables a complete range of exams from skull to weight-bearing knee and ankle exams.

## Accessories and Options



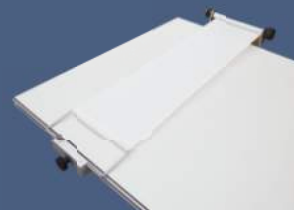
### ▶ Table Side Handgrips

These sturdy handgrips can be mounted along the entire length of both sides of the tabletop to enhance patient safety.



### ▶ Lateral Cassette Holder

This adjustable holder can be mounted along both sides of the tabletop allowing for access to a variety of cross-table lateral views.



### ▶ Compression Band

This compression device is used to safely secure patients to the tabletop.



## Rotating Tray \* optional upgrade

The easy-to-use rotating tray enables manual rotation of the DR detector. The stable one-handed operation supports fast portrait-to-landscape positioning without ever removing the detector from the tray. Fully extended steel slides activate locking mechanisms to assure detector protection when loading and unloading. Designed to accommodate a wide array of ISO 14" x 17" cassette-sized detectors.



# DR Features

## High Quality Images, Reduced Patient Dose

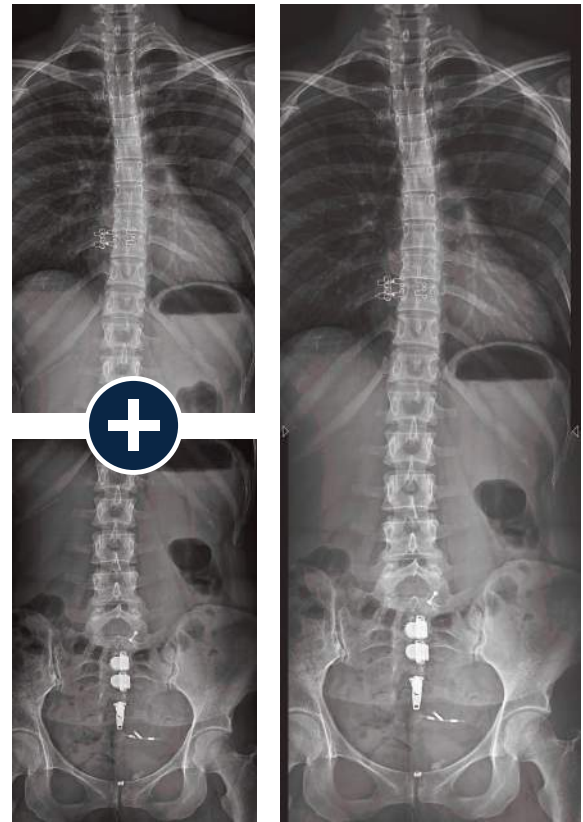
### DELWORKS

DELWORKS is a powerful image acquisition and processing software featuring a user-friendly interface that provides sophisticated and speedy medical imaging. Designed with complex system automation, DELWORKS aims to simplify the examination process by making difficult decisions for you.

Its advanced anatomical programming and image processing algorithms help optimize technologist productivity. DELWORKS strives to minimize human error and unwanted repeat exams to give technologists the highest quality image at a lower dose, with every exposure.

### Software Features

- ▶ Pre-exposure display of patient and procedure information, X-ray generator exposure factors, status and control functions integrated into a single display screen
- ▶ Exam-specific image processing algorithms automatically optimize images based on selected patient anatomy
- ▶ Enhanced image processing parameters. APR specific default values and manual adjustment, if desired
- ▶ Image rotation in 90° steps, horizontal mirroring, automatic and manual image cropping to collimated area
- ▶ Easy verification and correction of image laterality and patient orientation



### Image Stitching

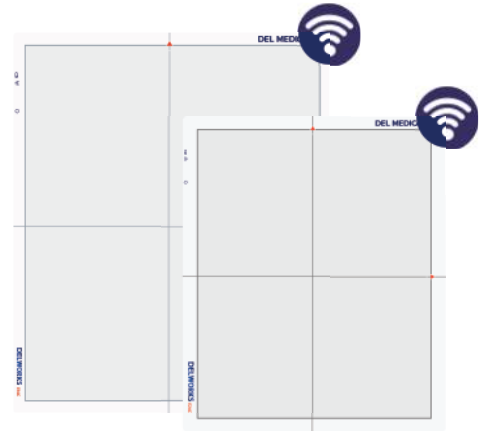
The optional image stitching application requires no unnecessary preprogramming or additional equipment, making full-length spine studies effortless and accurate.

- ▶ Intuitively add orientation markers and text comments directly to acquired images (pre-defined or free text)
- ▶ Detailed histograms of pixel density
- ▶ User selection of modified LUT (Look-Up Table) based on various exam types
- ▶ Manual adjustment of the LUT, window and level
- ▶ Effectively manage rejected images

# Premium Detectors Available in Single, Dual, or Multi-Detector Applications

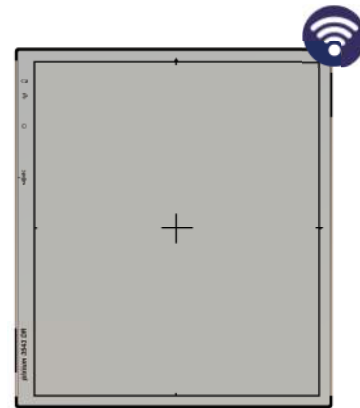
## E14C Wireless Detector

The E14C is an ultra-light, portable 14" x 17" (35 cm x 43 cm) wireless detector with outstanding image quality, offering the compact versatility needed to optimize workflow. The E14C has an internal accelerometer that automatically senses motion and takes the detector in and out of ready mode, extending its battery life.



## E24C Wireless Detector

The E24C is a compact 24 cm x 30 cm version of the E14C detector that is ideal for small anatomy and pediatric imaging.



## E14Ce Wireless Detector

The E14Ce is an economical and technology rich wireless 14" x 17" (35 cm x 43 cm) detector option with Cesium Iodide.

## EasyConnect

DELWORKS wireless detectors feature EasyConnect — an Auto Exposure Detection (AED) technology that keeps the detector in a standby mode, awaiting exposure from any x-ray source. Once the exposure is detected it instantly captures the x-ray image and transmits it wirelessly to the system workstation.

## E17C Fixed Detector

The E17C fixed, 17" x 17" (43 cm x 43 cm), large format flat-panel detector is designed to minimize technologist interaction with upright exams in a dual or multi-detector configuration. It is easy to integrate with all types of x-ray systems and delivers both quality images and fast exams for increased productivity.



# Technical Specifications

\* All specifications subject to change without notice

## FWFC Tube Stand

Ceiling height:	Minimum 96" (244 cm), Maximum 116" (295 cm)
Vertical travel:	Minimum 12" (26.5 cm), Maximum 73" (189 cm)
Longitudinal travel:	96" (244 cm) with 8 ft. rail
Rail longitudinal length:	8 ft. standard. 12 ft. and 6 ft. optional
Transverse travel:	9" (23 cm)
Column rotation:	±180° with detents 0°, 90°, 90°
Tube rotation:	+180°, -180°
Power requirements:	24 VDC

## RT100 Radiographic Table

Load Capacity:	700 lbs. (318 kg)
Table base length:	43" (109 cm)
Table base width:	29" (74 cm)
Tabletop movement:	Longitudinal, 51.50" (131 cm) Transverse, 9.5" (24 cm)
Tabletop-to-film distance:	3.25" (8 cm)
Total bucky travel:	Longitudinal 11.25" (28 cm)
Tabletop length:	86.66" (220 cm)
Tabletop width:	32" (81 cm)
Weight:	387 lbs (176 kg)
Power requirements:	120/230-240 VAC
Options:	78" (198 cm) tabletop length / Variety of grid options / Lateral cassette holder / Table-side patient handgrips / Compression band

## VS100 Wall Stand

Height:	86.7" (220.4 cm)
Receptor height:	23.4" (59.4 cm)
Vertical travel range:	58.4" (148.3 cm)
Width (with receptor):	23.3" (59 cm)
Depth (with receptor):	13" (33 cm)
Weight (wallstand with regular bucky):	280lbs (127 kg)
Power requirements:	24 VDC at 1.2 Amps



Associated X-Ray Imaging Corp. | 49 Newark Street, Haverhill MA 01832  
800-356-3388 | sales@associatedxray.com | associatedxray.com

